

HIBUILD LX

REINFORCED WET AREA WATERPROOFING MEMBRANE

PRODUCT DESCRIPTION

Tamsi HIBUILD LX is medium extensibility, fast cure, elasticised, water based, reinforced, waterproof membrane. Suitable for use in both new and existing construction for underground, internal and external areas.

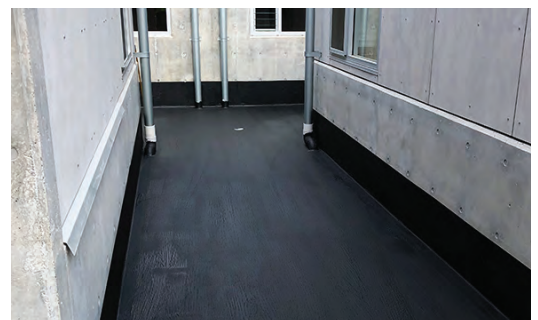
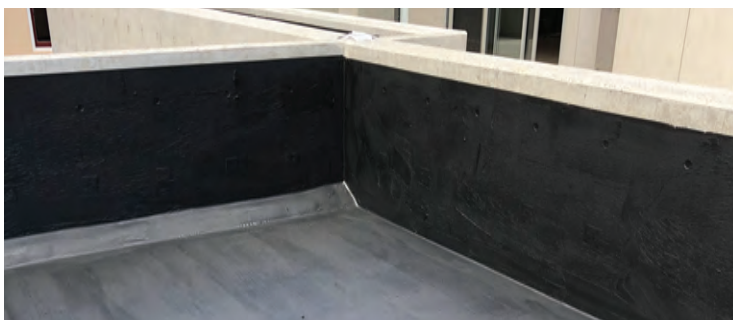
ADVANTAGES

- Easy to apply
- Certified class II elasticised water-based latex membrane
- Compliant to AS 4858:2004
- Fibre reinforced
- Does not re-emulsify once fully dried
- Designed for internal and external waterproofing applications with limited movement
- Low odour, environmentally safe and free of harmful chemicals
- Excellent bonding strength
- Cures to form a tough seamless membrane
- Compatible with most tile adhesives
- Ability to withstand continuously immersed areas

USES

- Retaining walls
- External cellar and basement walls
- Planter boxes and garden beds
- Ponds
- External under tile applications
- Roofs and gutters repairs
- Internal wet areas with limited movement

COLOUR	Black
COVERAGE	1.5-2L/m ² at 2 coats
APPLICATION TEMP	15-30 °C
RE-COAT	2-6 hours
HARD CURE	24-36h (15-30 °C 65%RH), min 5 days for flood testing
MIN CURING TEMP	5°C
PACKAGING	15L & 5L



Tamsi Industries
HIBUILD LX

SURFACE PREPARATION

All surfaces to be treated must be structurally sound; and existing coatings, adhesives, efflorescence should be removed to achieve maximum bond strength and resistance to hydrostatic pressure. Surfaces must be cleaned free of dirt, grease, oil, or other surface contaminants. Holes, non-structural cracks or other surface deformities should be repaired.

PRIMING

Tamsi membranes are recommended to be applied onto primed surfaces.

- EASYPRIME – for all under tile wet areas
- HYDROSTOP – on surfaces with residual or rising damp and for external applications, smooth surfaces such as cement sheet and over some tiles.

For Scyon cement sheeting:

- Internal: Tamsi Easyprime – drying time 15-30min
- External: Tamsi Hydrostop Epoxy recommended – drying time 2h - 6h

APPLICATION

- Tamsi HIBUILD LX can be applied with a brush or roller.
- Apply product at 2 or more coats and at a total coverage of 1.5-2L/m², forming a dried film thickness of approximately 1.5mm (vertical 0.8mm).
- Allow 24 hours drying before tiling or topping application. In cool or non-porous surfaces this may be prolonged.
- Allow to cure for at least 5 days if water ponding test is required.
- At all junctions apply bond breaker or fast cure mastic fillet.
- At all junctions embedded polyester/rubber reinforcing tape into membrane.
- Do not apply when surface temperature is below 5°C or above 35°C.

TEST DATA

AS4858:2004 Durability of Waterproof Membranes

CONDITION	ELONGATION %
Control	242 - CLASS II
Water Immersion	530
Bleach Immersion	427
Detergent Immersion	195
Heat Ageing	147

Result: Test results meet the requirements of AS4858 for a Class II

OVERCOAT

Allow at least 4 hours of curing time depending on the weather.

PRECAUTIONS

- During conditions of low temperature or high humidity the HIBUILD LX curing rate will slow dramatically.
- Avoid applying over any surfaces that have been previously coated or treated with curing compounds, concrete bonding agents or acrylic coatings. These areas must be mechanically cleaned by grinding to produce a contamination free surface.
- Do not apply to areas subject to heavy foot traffic in commercial environments or vehicular traffic.
- Do not apply to areas when rain is imminent.
- Planter Boxes' waterproofing must be in accordance with AS4654.2-2012 For planter boxes and retaining walls, protection board must be placed against membrane before back-filling. Planter bases need to have drainage cell and protection board to allow water flow and to protect the membrane.

SAFETY PRECAUTIONS

Tamsi HIBUILD LX is safe water based product however; avoid contact with skin and eyes. Use protective gloves. Ensure there is adequate ventilation and avoid breathing vapours. Keep away from children. If swallowed do not induce vomiting. Give plenty of milk or water. Seek medical advice. Keep containers in a well-ventilated place. In enclosed areas, such as water tanks and basements, ventilation should be provided to enable adequate evaporation of the coating. In case of eye contact, rinse with plenty of water or contact Poisons Information Centre. If swallowed immediately contact doctor or Poisons Information Centre 131 126.

ADDITIONAL INFORMATION IS LISTED IN (MSDS)

CLEAN UP

Clean up with water while wet. Once dried product needs to be removed mechanically or by solvent.

Disclaimer: This Technical Datasheet (TDS) contains technical details and recommendations based on our best knowledge and the information available at the time. You should read this TDS carefully and consider the information in the context of how the product will be used, including in conjunction with any other product and the type of surfaces to, and the manner in which, the product will be applied. Our responsibility for products sold is subject to our standard terms and conditions of sale. Tamsi Industries does not accept any liability either directly or indirectly for any losses suffered in connection with the use or application of the product whether or not in an accordance with any advice, specification, recommendation or information given by it.

September 2018