

PROTECT LX

UNDER-TILE WET AREA WATERPROOFING MEMBRANE

PRODUCT DESCRIPTION

Tamsi PROTECT LX is flexible and elastomeric liquid rubber membrane designed for waterproofing wet areas, showers, balconies and decks that will be covered over with toppings and/or tiles beds.

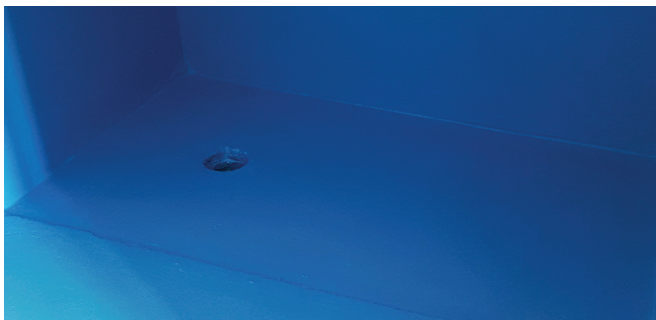
ADVANTAGES

- Compliant to AS4858:2004 – Internal Wet Areas Waterproofing
- Certified class III elasticised water-based latex membrane
- Easy to apply
- Fibre reinforced
- Does not re-emulsify once fully dried.
- Durable and tough seamless finish
- Flexible & Elastomeric
- Designed for internal waterproofing and under tile external applications.
- Low odour, environmentally safe & free of harmful chemicals
- Compatible with most tile adhesions
- Excellent bonding properties

USES

- Internal wet areas, bathrooms and laundries
- External wet areas, balconies, decks and podiums
- General tiled areas to prevent moisture ingress
- Protective membrane under external acrylic coatings

COLOUR	Blue
COVERAGE	1.5-2L/m ² at 2 coats
APPLICATION TEMP	15-30 °C
RE-COAT	2-6 hours
HARD CURE	24-36h (15-30 °C 65%RH), min 5 days for flood testing
MIN CURING TEMP	5°C
PACKAGING	15L & 5L



Tamsi
PROTECT LX

SURFACE PREPARATION

All surfaces to be treated must be structurally sound; and existing coatings, adhesives, efflorescence should be removed to achieve maximum bond strength and resistance to hydrostatic pressure. Surfaces must be cleaned free of dirt, grease, oil, or other surface contaminants. Holes, non-structural cracks or other surface deformities should be repaired.

PRIMING

Tamsi membranes are recommended to be applied onto primed surfaces.

- EASYPRIME – for all under tile wet areas
- HYDROSTOP – on surfaces with residual or rising damp and for external applications, smooth surfaces such as cement sheet and over some tiles
- PREMIUM PRIME- External applications and all smooth non porous surfaces

For Scyon cement sheeting:

- Internal: Tamsi Easyprime
- External: Tamsi Hydrostop Epoxy recommended or Tamsi Premium Prime

APPLICATION

Tamsi PROTECT LX can be applied with a brush or roller.

- Apply product at 2 or more coats and at a total coverage of 1L/m², forming a dried film thickness of approximately 1.5-2mm minimum (vertical 0.8mm).
- Allow 24 hours drying before tiling or topping application. In cool or non-porous surfaces this may be prolonged.
- Allow to cure for at least 5 days if water ponding test is required.
- At all junctions apply bond breaker or fast cure mastic fillet.
- At all junctions embedded polyester/rubber reinforcing tape into membrane.
- Do not apply when surface temperature is below 5°C or above 35°C.

TEST DATA

AS4858:2004 Durability of Waterproof Membranes

CONDITION	ELONGATION %
CONTROL	761 CLASS III
WATER IMMERSION	799
BLEACH IMMERSION	670
DETERGENT IMMERSION	777
HEAT AGEING	614

Result: Test results meet the requirements of AS4858 for a Class III

OVERCOAT

Allow at least 2-6 hours of curing time depending on the weather.

PRECAUTIONS

During conditions of low temperature or high humidity the PROTECT LX curing rate will slow dramatically.

- Avoid applying over any surfaces that have been previously coated or treated with curing compounds, concrete bonding agents or acrylic coatings. These areas must be mechanically cleaned by grinding to produce a contamination free surface.
- Do not apply to areas subject to heavy foot traffic in commercial environments or vehicular traffic.
- Do not apply to areas when rain is imminent.
- Planter Boxes' waterproofing must be in accordance with AS4654.2-2012 For planter boxes and retaining walls, protection board must be placed against membrane before back- filling. Planter bases need to have drainage cell and protection board to allow water flow and to protect the membrane.

SAFETY PRECAUTIONS

Tamsi PROTECT LX is safe water based product however; avoid contact with skin and eyes. Use protective gloves. Ensure there is adequate ventilation and avoid breathing vapours. Keep away from children.

If swallowed do not induce vomiting. Give plenty of milk or water. Seek medical advice. Keep containers in a well-ventilated place. In enclosed areas, such as water tanks and basements, ventilation should be provided to enable adequate evaporation of the coating. In case of eye contact, rinse with plenty of water or contact Poisons Information Centre.

If swallowed immediately contact doctor or Poisons Information Centre 131 126.

ADDITIONAL INFORMATION IS LISTED IN (MSDS)

CLEAN UP

Clean up with water while wet. Once dried product needs to be removed mechanically or by solvent.

Disclaimer: This Technical Datasheet (TDS) contains technical details and recommendations based on our best knowledge and the information available at the time. You should read this TDS carefully and consider the information in the context of how the product will be used, including in conjunction with any other product and the type of surfaces to, and the manner in which, the product will be applied. Our responsibility for products sold is subject to our standard terms and conditions of sale. Tamsi does not accept any liability either directly or indirectly for any losses suffered in connection with the use or application of the product whether or not in accordance with any advice, specification, recommendation or information given by it.

March 2022